



Innovación en Superficies^{MR}

Catálogo de Pisos, Tapetes y Alfombras

No. 6500 FITNESS MAT

- Tapete fabricado de hule de alta calidad con excelentes propiedades para absorber el impacto de barras, mancuernas, discos, aparatos o cualquier otra aplicación en donde se requiera un piso de alta resistencia.
- Fácil instalación, sólo ármelo y ya, no necesita pegarlo, clavarlo o anclarlo. Si desea cambiarlo de lugar, sólo desármelo y vuélvalo a armar.
- Evite costosos mantenimientos de pisos o duela, proteja su piso, su inversión en pesas, equipo y mejore la apariencia del área.

Construcción: Hule de Alta Calidad y Durabilidad.

Acabado: Antiderrapante

Espesor: 3/8" (8 mm) y 1/4" (6.3 mm).

Aplicaciones: Ideal para ser colocado en instalaciones deportivas en área de peso libre, áreas de usos múltiples, área de ejercitadores, área de aparatos cardiovasculares y en general cualquier área en donde se requiera un piso de alta resistencia.



Espesor	Color
6 mm	Azul, Verde y Negro
8 mm	Negro

No. 6500 FITNESS MAT

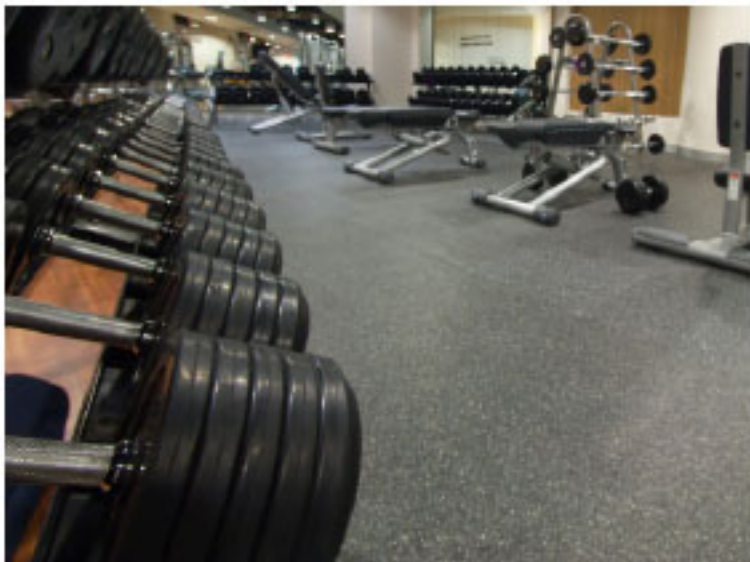
No. Stock	Medida Estándar	Peso
7501042051768	50 cm x 50 cm	11.20 kg

* Cada metro cuadrado se compone de cuatro piezas de 50 cm x 50 cm.

* Para limpiar utilice agua y jabón diluido, no utilice productos químicos.



No. 6500 FITNESS MAT CON CHISPAS GRISES Y AZULES



- Piso fabricado de hule de alta calidad con excelentes propiedades para absorber el impacto de barras, mancuernas, discos, aparatos o cualquier otra aplicación en donde se requiera un piso de alta resistencia.
- Fácil instalación, sólo ármelo y ya, no necesita pegarlo, clavarlo o anclarlo. Si desea cambiarlo de lugar, sólo desármelo y vuélvalo a armar.
- Evite costosos mantenimientos de pisos o duela, proteja su piso, su inversión en pesas, equipo y mejore la apariencia del área.
- Ideal para colocarse en pistas de hielo, soporta las navajas de los patines.
- Fácil mantenimiento, límpielo con un detergente suave o simplemente con agua.

Construcción: Hule de Alta Calidad y Durabilidad.

Acabado: Antiderrapante.

Espesor: 6 mm

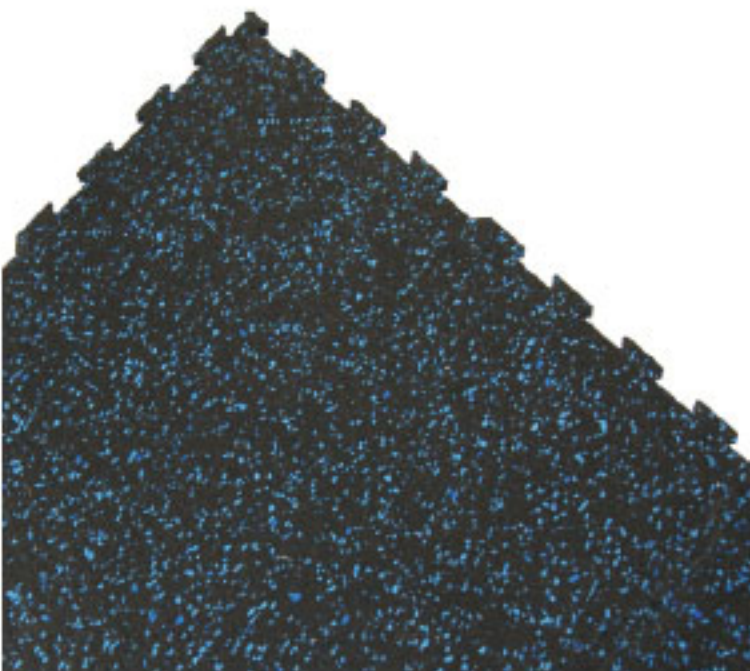
Tamaño: 50 x 50 cm

Aplicaciones: Ideal para ser colocado en instalaciones deportivas en el área de peso libre, áreas de usos múltiples, área de ejercitadores, área de aparatos cardiovasculares y en general cualquier área en donde se requiera un piso de alta resistencia.

No. 6500 Fitnessmat con Chispas Grises y Azules

No. Stock	Medida Estándar	Color
7501042082120	50 cm x 50 cm x 6 mm	Negro con chispas grises
7501042082137	50 cm x 50 cm x 6 mm	Negro con chispas azules

* Cada metro cuadrado se compone de cuatro piezas de 50 cm x 50 cm.
* Para limpiar utilice agua y jabón diluido, no utilice productos químicos.



No. 18000 TAPETES PARA YOGA

- Tapete fabricado en esponja de PVC antiderrapante.
- Se guarda con facilidad, sólo requiere enrollarlo y cabe en cualquier bolsa.
- Evita sufrir de la incomodidad del piso, y cuida sus huesos y articulaciones al utilizar un tapete suave que le permite hacer todos los estiramientos que requiere el Yoga.
- Puede personalizarse con tu logotipo.
- Disponible en 2 diferentes colores: Azul y Rosa.

Construcción: Esponja de PVC

Acabado: Antiderrapante

Espesor: 4 mm

Aplicaciones: Ideal para practicar Yoga en clubes deportivos y gimnasios, puede utilizarse sobre cualquier superficie.



No. 18000 Tapetes para Yoga

No. Stock	Medida Estándar	Colores
7501042080997	61 cm x 181 cm x 4mm	Azul Rey y Rosa

No. 8200 PISO IMITACIÓN MADERA

- Piso fabricado en PVC con apariencia similar a los pisos laminados de madera.
- No requiere de mantenimiento.
- No se raya como la madera.
- De fácil instalación.
- Para limpiarlo sólo basta un poco de agua y detergente suave.

Construcción: PVC Laminado

Acabado: Liso

Espesor: 2 mm

Aplicaciones: Ideal para gimnasios, clubes deportivos, áreas de baile y aeróbicos, spinning, e inclusive para pisos de oficinas o sucursales comerciales.

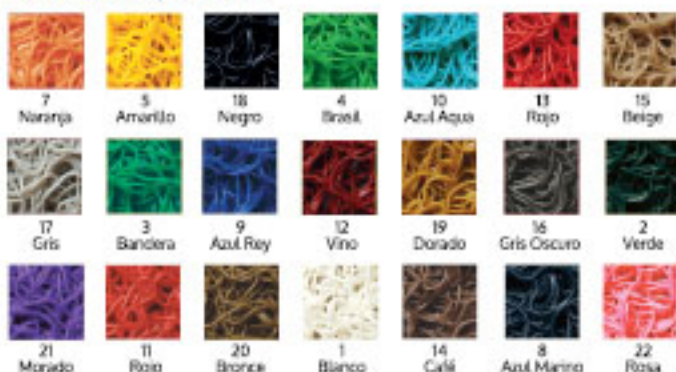


No. 8200 Piso Imitación Madera

No. Stock	Medida Estándar	Color
7501042070219	2 m x 20 m x 2 mm	Haya



Colores Disponibles



Colores Disponibles



No. 6600 PRO IMAGE ®

- Tapete antiderrapante en rollo ideal para áreas de albercas o vestidores, este tapete ofrece una superficie seca y segura.
- Contiene protector antihongos y protector UV. Ideal para exteriores e interiores.
- Excelente retenedor de Polvo, Humedad y Mugre.

Construcción: PVC 100% Virgen de Alta Calidad

Acabado: Tipo Spaguetti

Espesor: 3/8" (9.5 mm) y 1/2"

Base: Disponible con o sin base.

Aplicaciones: Ideal para áreas húmedas en clubes deportivos, escuelas, hoteles, autoservicios, centros comerciales, corporativos, comercios, e industria en general.

Rollo sin base		
No. Stock	Medidas Estándar	Peso por rollo aprox.
7501042020306	1.22 m x 10 m	37 kg
7501042020313	1.22 m x 20 m	74 kg

Rollo con base		
No. Stock	Medidas Estándar	Peso por rollo aprox.
7501042020337	1.22 m x 6 m	43 kg
7501042020371	1.22 m x 10 m	71 kg

* Otras medidas disponibles, consulte a nuestro departamento de ventas.

No. 2200 WET ZONE ®

- Innovador tapete en rollo ideal para tráfico descalzo, es antiderrapante y muy cómodo de pisar.
- Contiene protector antihongos y protector UV.
- Sus orificios permiten el fácil drenado de líquidos, provee una superficie seca y segura.

Construcción: PVC 100% Virgen de Alta Calidad

Acabado: Panal

Espesor: 5.2 mm

Base: Sin base

Aplicaciones: Ideal para áreas húmedas en clubes deportivos, escuelas, hoteles, autoservicios, centros comerciales, corporativos, comercios, e industria en general.

Rollo sin base		
No. Stock	Medida Estándar	Peso por rollo aprox.
7501042060067	0.90 m x 15 m	49 kg

No. 3900 PASTO ARTIFICIAL PARA USO RESIDENCIAL

- Producto para decoración de jardín, altamente resistente y durable, soporta los cambios bruscos de temperatura, la humedad y las temperaturas extremas.
- Contiene protector solar contra rayos UV.
- Luce natural y dura más que el pasto real.
- No acumula insectos ni tierra.
- Olvídate de tener que podar y dar mantenimiento al jardín, con el Pasto Artificial podrás tener siempre un lugar verde y fresco sin gastar más.
- Fácil de limpiar, sólo riega con agua.

Reverso: Polipropileno

Construcción: Polipropileno PP2200

Espesor: 40 mm

Tamaño: Rollos de 2 y 4 metros x 40 m de largo.

Altura de filamento: 7 mm

Tipo de Fibra: Césped fibrilado.

Costuras: 240 / 1m 60480 / 1m2

Espesor: 5/32 in

Aplicaciones: Ideal para jardines residenciales, en hoteles, restaurantes, o como pasto decorativo en escenografías y sets de cine.



PASTO ARTIFICIAL PARA USO RESIDENCIAL

No. Stock	Medidas Estándar	Color
7501042061212	2 ó 4m x 40 m	Verde



No. 6900 KIDS MAT®

No. Stock	Medida Estándar	Color
7501042070202	50 cm x 50 cm x 14 mm de espesor	Terracota

No. 6900 KIDS MAT®

Uso Exterior

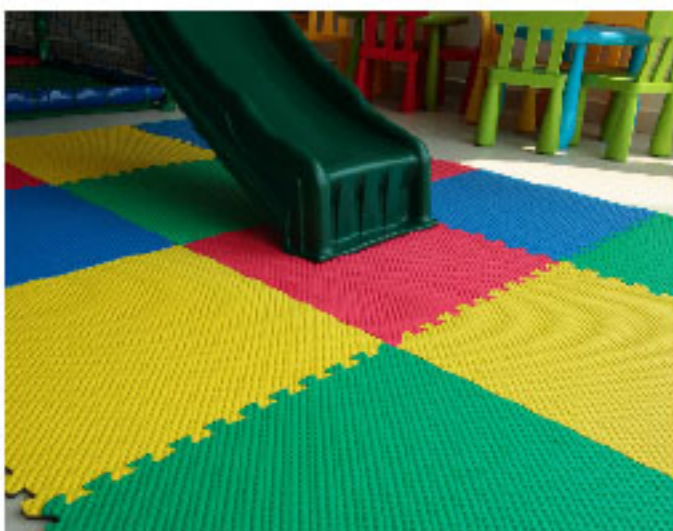
- Piso fabricado en hule EPDM reciclado aglutinado con resina de poliuretano de alta calidad con excelentes propiedades para absorber el impacto, ideal para proteger caídas y resbalones y/o cualquier otra aplicación que requiera un piso de alta calidad.
- El mejor piso para áreas de juegos infantiles soporta la intemperie y el uso rudo y el alto tráfico de personas, es por ello que es ideal para patios de juegos, parques y otros usos.
- Hule sanitario especialmente formulado para estar en contacto con la piel.

Construcción: Fabricado de Hule EPDM.

Color: Terracota

Espesor: 14 mm

Aplicaciones: Ideal para áreas de juego infantil exteriores, como parques, patios y hasta para gimnasios en exteriores.



No. 16000 SOFT PLUS®

No. Stock	Medida Estándar	Color
7501042080133	50 cm x 50 cm x 11 mm de espesor	Amarillo, azul, rojo y verde. (Frente) Negro (Reverso)

No. 16000 SOFT PLUS®

Uso Interior

- Piso multiusos de dos vistas.
- Ideal para evitar raspones y caídas en áreas de juego infantil.
- Fácil de colocar (armado modular en rompecabezas).
- Superficie texturizada para evitar derrapones.
- Fácil de limpiar.

Construcción: Fabricado de foamy.

Espesor: 11 mm

Bordes: 16 bordes por paquete.

Colores: Amarillo, azul, rojo y verde (Frente) Negro (Reverso).

Aplicaciones: Ideal para áreas de juego infantil techadas y salones de usos múltiples, también funciona como un excelente piso para gimnasio casero.

*Se vende únicamente en KIT de 2 m² (8 piezas).

No. 1500 MODELO ZURICH

- Excelente alfombra modular de alta resistencia y durabilidad ideal para alto tráfico de personas.
- Disponible en 5 diferentes colores.
- Puede cambiarse en módulos en caso de que se dañe una sección.
- Resiste el peso de los muebles de oficina.
- Fácil de limpiar.
- Propiedades antiestáticas.

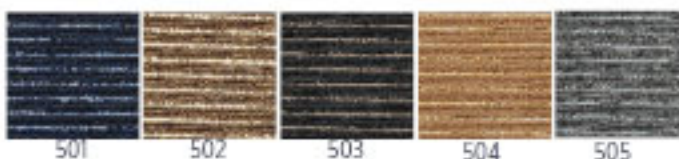
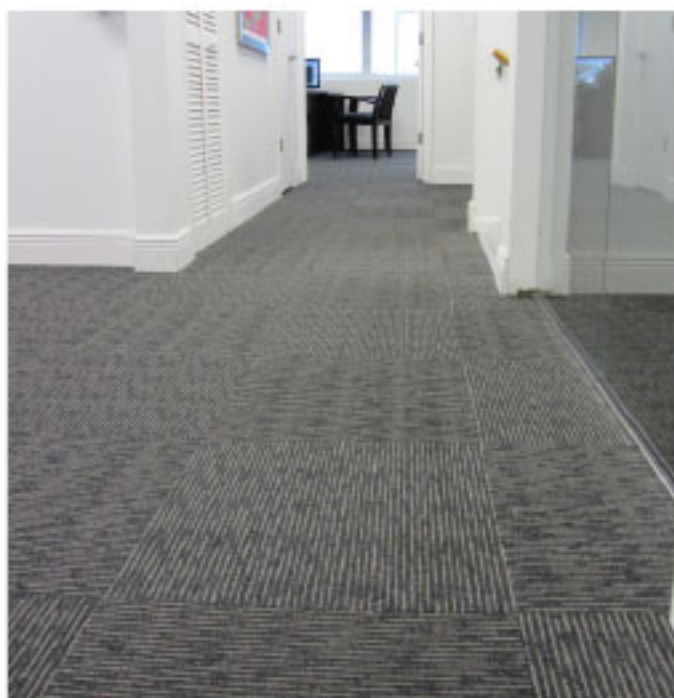
Construcción: 100% Fibra de Polipropileno.

Espesor: 5 mm

Tamaño: 50 x 50 cm

Peso por Caja: 19 kg

Aplicaciones: Ideal para cualquier oficina, sucursal o local comercial donde exista alto tráfico.



Alfombra Modular Modelo Zurich

No. Stock	Medida Estándar	Peso
7501042061212	50 cm x 50 cm x 5 mm	1 kg

No. 1530 MODELO MARBELLA

- Excelente alfombra modular de alta resistencia y durabilidad ideal para alto tráfico de personas.
- Puede cambiarse en módulos en caso de que se dañe una sección.
- Resiste el peso de los muebles de oficina.
- Fácil de limpiar.
- Propiedades antiestáticas.

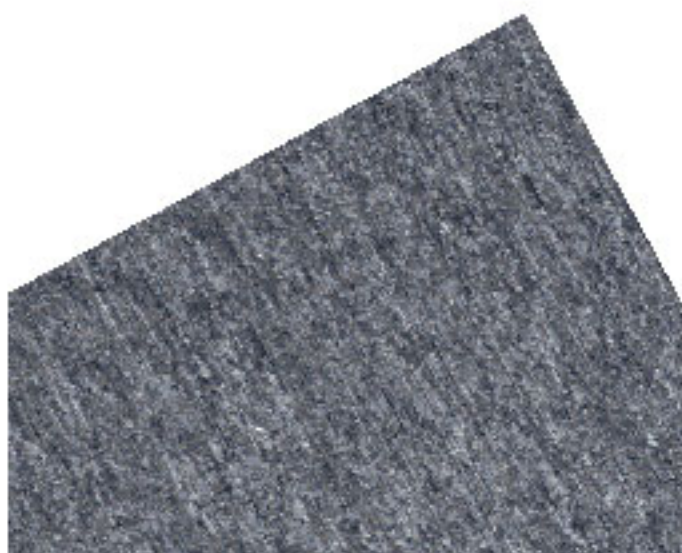
Construcción: 100% Fibra de Polipropileno.

Espesor: 5 mm

Tamaño: 50 x 50 cm

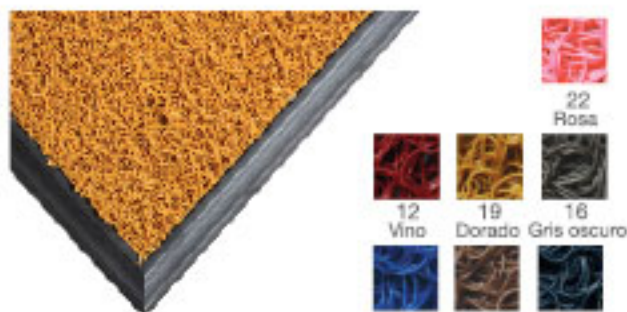
Peso por Caja: 19 kg

Aplicaciones: Ideal para cualquier oficina, sucursal o local comercial donde exista alto tráfico.



Alfombra Modular Modelo Marbella

No. Stock	Medida Estándar	Peso
7501042061212	50 cm x 50 cm x 5 mm	1 kg



Colores Disponibles



No. 6700 PRO IMAGE ®

- Fabricados con filamentos de PVC de alta calidad orientados aleatoriamente y unidos entre sí, forman una superficie antiderrapante.
- Excelente retenedor de polvo, humedad y mugre.
- Contiene protección anti-hongos y protección UV.

Construcción: PVC 100% Virgen de Alta Calidad
Espesor: 3/8" (9.5 mm).

Base: Disponible con o sin base.

Bordes: Disponible con borde o con orilla achaflanada.

Aplicaciones: Ideal para entradas interiores y exteriores.

No. 6700 PRO IMAGE®

No. Stock	Medidas Estándar	Peso
7501042020375	Cualquier medida	6.5 kg/m ²



Colores Disponibles



No. 6900 LAUNDRER MAT ®

- Excelente tapete con base de tejido de Nylon y reverso en Hule o PVC excelente para cualquier entrada interior, además está disponible en una gran variedad de colores.
- Retiene el polvo, la mugre y la humedad.
- 100% Lavable, no se despinta.

Acabado: Tejido de Nylon de primera calidad sobre una base de hule nitrilo o PVC antiderrapante resistente a grasas y aceites.

Espesor: 5/16" (7.9 mm)

Bordes: Bordes de hule negro o PVC

Aplicaciones: Ideal para entradas interiores y exteriores de hoteles, autoservicios, centros comerciales, corporativos, clubes deportivos, comercios e industria en general.

No. Stock	Medidas Estándar	Colores
7501042051669	0.89 m x 0.75 m	Escoja hasta 8 colores en un mismo tapete de nuestra gama de 53 vivos colores
7501042051676	0.89 m x 1.20 m	
7501042051683	0.89 m x 1.50 m	
7501042051690	0.89 m x 3.00 m	
7501042051706	1.15 m x 1.75 m	
7501042052437	1.15 m x 2.40 m	
7501042052444	1.50 m x 1.75 m	
7501042052451	1.50 m x 2.40 m	
7501042052468	1.5 m x 3.60 m	

No. 17500 DOUBLE RIB®

- Tapete de tela, excelente para cualquier entrada comercial que reciba alto tráfico.
- Resistente a la intemperie y a los rayos UV.
- Se puede sacudir y es muy fácil de lavar.
- Evita los resbalones.

Construcción: Fabricado de Polipropileno.

Acabado: Doble Costilla.

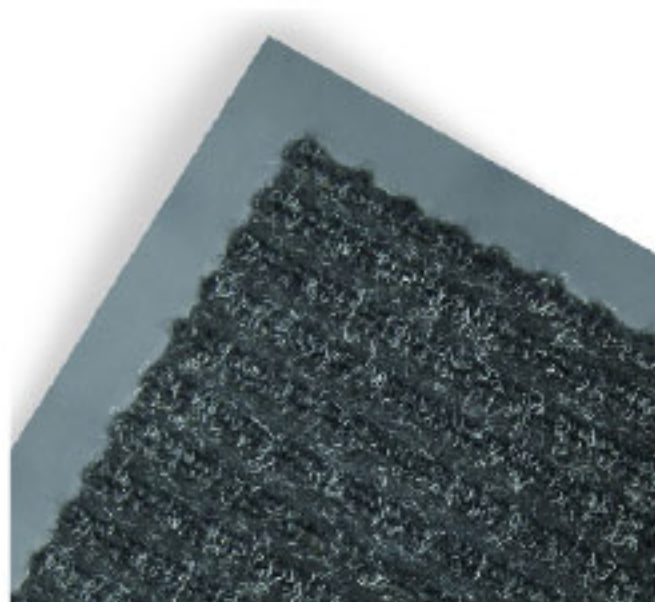
Base: Base fabricada en PVC Antiderrapante.

Aplicaciones: Ideal para entradas de edificios, oficinas, hospitales, sucursales bancarias, corporativos, oficinas de gobierno, y entradas de todo tipo.

Colores Disponibles



Café Gris
Oscuro



No. 17500 DOUBLE RIB®

No. Stock	Medidas Estándar	Color
7501042080898	60 x 90 cm	Gris Oxford o Café
7501042070028	80 x 100 cm	Gris Oxford
7501042082113	90 x 150 cm	Gris Oxford

No. 2500 FINGER TIP PREMIUM®

- Miles de "costillas limpiadoras" retienen y ocultan mugre, humedad, arena y tierra como ningún otro tapete.
- Los bordes biselados brindan protección contra tropezones.
- Fabricado de hule acojinado antiderrapante muy cómodo de pisar.
- Contiene protector antihongos y protector UV.

Construcción: Hule 100% Virgen de Alta Calidad

Espesor: 10 mm

Aplicaciones: Ideal para entradas interiores y exteriores de hoteles, autoservicios, centros comerciales, corporativos, clubes deportivos y comercios e industria en general.



No. 2500 FINGER TIP PREMIUM®

No. Stock	Medidas Estándar	Peso
7501042011021	40 x 60 cm	2.2 kg
7501042020108	60 x 81 cm	4 kg
7501042020122	81 x 99 cm	7 kg
7501042050082	91 x 182 cm	16 kg



Color



Negro

No. 8900 Tapete de Hule Antiestático

No. Stock	Ancho	Largo
7501042051744	100	1 a 10 metros
7501042051829	Cable de 4.5 mts de largo	

* Otras medidas disponibles, consulte a nuestro departamento de ventas.



Color



Negro

Tapetes

No. Stock	Ancho	Largo
7501042050884	0.90 m x 1.20 m	8 kg
7501042050884	0.90 m x 1.50 m	10 kg

* Otras medidas disponibles, consulte a nuestro departamento de ventas.

No. 8900 CLASSIC ESD®

- Tapete de hule de alta calidad ideal para descargar la estática del personal antes de que pueda dañar equipos sensibles.
- Producto de gran estabilidad y durabilidad.
- Es antiderrapante, previene resbalones y brinda máxima seguridad.
- Resistencia al envejecimiento por ozono.

Resistencia en la superficie: 1×10^7 Ohms

Construcción: Hule 100% Virgen de Alta Calidad.

Acabado: Liso

Espesor: 1/8" (3.2 mm)

Dureza: 60 +/- 10 Shore A

Resistencia a la tensión: 450 PSI

Elongación: 300%

Rango de Temperatura: -15 °C a 70 °C

Aplicaciones: Ideal para descargar del personal la electricidad estática evitando dañar equipos sensibles.

No. 9550 DIAMOND TOP®

- Tapete antifatiga antiestático en rollo fabricado de una resistente capa de PVC antiderrapante sobre una base de esponja de neopreno ideal para descargar la estática del personal antes de que pueda dañar equipos sensibles.
- Ideal para áreas con alto tráfico.
- Superficie diamantada brinda máxima tracción.
- Producto Garantizado por 2 años contra defectos de fabricación.

Resistencia en la superficie: Sólo 1×10^5 Ohms

Construcción: Superficie diamantada de PVC sobre una base de esponja de Neopreno.

Acabado: Diamantado antiderrapante

Espesor: 9/16" (14.28 mm)

Aplicaciones: Ideal para descargar del personal la electricidad estática evitando dañar equipos sensibles.

Rollos

No. Stock	Medida Estándar	Peso
750104205877	0.91 m x 22.86 m	153 kgs

* Otras medidas disponibles, consulte a nuestro departamento de ventas.

TAPETES ANTIFATIGA

• Modular Classic ®	5500	3
• Solid Top ®	9000	3
• Advantage Lite ®	6100	4
• Diseño Panal	5700	4
• Safety Sponge ®	9100	5
• Diamond Top ®	9500	6
• Marble Mat	3750	7
• Counter Mat	3800	7
• Comfort Mat	3050	7

TAPETES PERSONALIZADOS

• Tapete Tipo Rizo Pro Image ®	6500	8
• Jet Print ® - Tapete de Tela con Logotipo	6200	9
• Graphic Premium ® - Tapete de Tela con Logotipo	6300	9

SUPERFICIES DEPORTIVAS

• Fitness Mat - Piso Gimnasio	6500	10
• Fitness Mat - Piso Gimnasio con Chispas Grises y Azules	2200	11
• Tapetes para Yoga	18000	12
• Piso Imitación Madera	8200	12
• Pro Image Roll.® - Area de Albercas	6600	13
• Wet Zone ® - Area de Albercas	2200	13
• Pasto Artificial para uso Residencial	3900	14

PISOS INFANTILES

• Kids Mat ® (Uso Exterior)	6900	15
• Soft Plus ® (Uso Interior)	16000	15

ALFOMBRAS MODULARES

• Modelo Zurich - Alfombra Modular	1500	16
• Modelo Marbella - Alfombra Modular	1530	16

TAPETES DE ENTRADA

• Tapete Tipo Rizo Pro Image ®	6700	17
• Laundry Mat ®	6900	17
• Double Rib ®	17500	18
• Finger Tip Premium ®	2500	18

TAPETES ANTIESTÁTICOS

• Classic ESD ® Tapete Antiestático	8900	19
• Diamond Top ® Antiestático	9550	19

PISOS DIELECTRICOS

• Piso Dieléctrico Negro	8700	20
• Piso Dieléctrico Gris	8700	20

PISOS ANTIDERRAPANTES

• Hule Piso Estriado	8400	21
• Hule Piso Tachón	8400	21
• Piso PVC Alto Tráfico	8600	22
• Pegamento para Piso Antiderrapante	U-7200	22

TAPETES ESPECIALES

• Tapete Sanitizante	12500	23
• Tapete Cuarto Limpio - Clean Room Mat ®	1500	23
• Stall Mat ®	6800	23
• Coir Mat	8403	23

UNIMAT DE MÉXICO, S.A. DE C.V.
Calle 4 No. 25-D Fracc. Industrial Alce Blanco, Naucalpan, Estado de México CP 53370, México.

Atención a Clientes: Tels: (55) 5236-5420, (55) 5359-7178 Fax: (55) 5236-5421
Email: ventas@unimatcorporation.com Pág Web: www.unimat.com.mx



No. 8700 HULE PISO DIELECTRICO

- Piso de hule de alta calidad diseñado para proteger al personal de descargas eléctricas en áreas de equipos y tableros de alto voltaje.
- Es antiderrapante, previene resbalones y brinda máxima seguridad.
- Tiene máxima resistencia a la intemperie.
- Producto de gran estabilidad y durabilidad.
- Gran resistencia al impacto.
- Contiene protector anti-hongos.

Rigidez Dieléctrica (aislamiento en volts) disponible en tres resistencia de voltaje: 18,000 volts, 30,000 volts, 40,000 volts.

Construcción: Hule Dieléctrico de Alta Calidad.
Acabado: Mil Rayas o Estriado.

Espesor: ¼" (6.3 mm)

Resistencia a la Tensión: 500 PSI

Elongación: 385%

Rango de Temperatura: -20°C a 65°C

Aplicaciones: Ideal para cualquier área en donde se requiera proteger al personal de descargas eléctricas.

No. 8700 HULE PISO DIELECTRICO

- Piso de hule de alta calidad diseñado para proteger al personal de descargas eléctricas en áreas de equipos y tableros de alto voltaje.
- Es antiderrapante, previene resbalones y brinda máxima seguridad.
- Tiene máxima resistencia a la intemperie.

Rigidez Dieléctrica (aislamiento en volts): 30,000 volts.

Construcción: Hule Dieléctrico de Alta Calidad.
Acabado: Mil Rayas o Estriado.

Espesor: 1/8" (3.2 mm)

Resistencia a la Tensión: 500 PSI

Elongación: 385%

Rango de Temperatura: -20°C a 65°C

Aplicaciones: Ideal para cualquier área en donde se requiera proteger al personal de descargas eléctricas.



Color

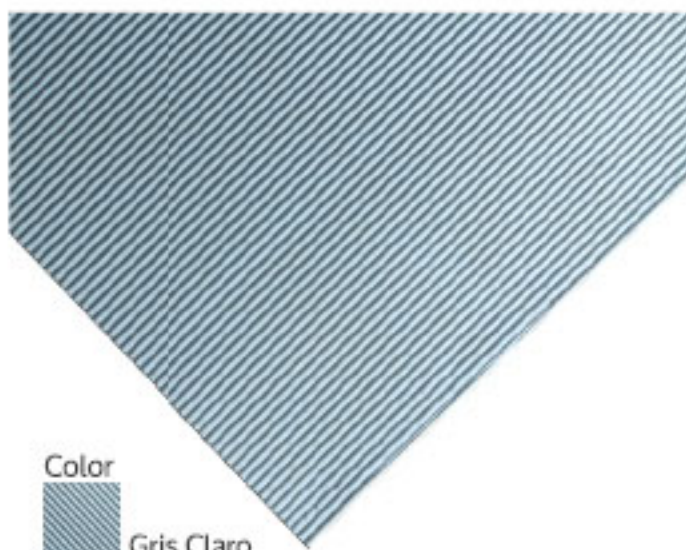


Negro

No. 8700 Hule Piso Dieléctrico

No. Stock	Medidas Estándar	Peso
7501042051737	1 m x 25 m - 18,000 volts	210 kg
7501042020184	1 m x 25 m - 30,000 volts	210 kg
7501042020191	1 m x 25 m - 40,000 volts	210 kg

* Otras medidas disponibles, consulte a nuestro departamento de ventas.



Color



Gris Claro

No. 8700 Hule Piso Dieléctrico

No. Stock	Medida Estándar	Peso por rollo apróx.
7501042051720	1 m de ancho x 25 m de largo	105 kg

* Otras medidas disponibles, consulte a nuestro departamento de ventas.



Color



Negro

No. 8400 Piso de Hule Antiderrapante Mil Rayas

No. Stock	Medidas Estándar	Peso
7501042051713	1 m de ancho x 25 m de largo	105 kg
7501042051714	60 cm de ancho x 20 m de largo	50 kg

* Otras medidas disponibles, consulte a nuestro departamento de ventas.



Color



Negro

No. 8400 Piso de Hule Antiderrapante Diseño Tachón

No. Stock	Medida Estándar	Peso
7501042051720	1 m de ancho x 25 m de largo	105 kg

* Otras medidas disponibles, consulte a nuestro departamento de ventas.

No. 8400 PISO DE HULE ANTIDERRAPANTE MIL RAYAS

- Piso de hule antiderrapante de alta calidad ideal para ser colocado en áreas inclinadas, resbalosas o de alto tráfico.
- Tiene máxima resistencia a la intemperie.
- Se puede colocar sobre cualquier superficie.
- Resistente a la abrasión, desgaste y a los rayos UV.
- Gran resistencia al impacto.
- Es flexible, no se ondula.

Construcción: Hule 100% Virgen de Alta Calidad.

Acabado: Estriado o mil rayas

Espesor: 1/8" (3 mm)

Dureza: 68 +/- 5 Shore A

Resistencia a la Tensión: 66 kg / cm²

Elongación: 385%

Rango de Temperatura: -20°C a 70°C

Aplicaciones: Ideal para rampas, entradas interiores y exteriores, auditorios, pasillos y en general cualquier área en donde se requiere un piso antiderrapante de alta resistencia.

No. 8400 PISO DE HULE ANTIDERRAPANTE TACHÓN

- Piso de hule antiderrapante de alta calidad ideal para ser colocado en áreas inclinadas, resbalosas o de alto tráfico.
- Tiene máxima resistencia a la intemperie.
- Se puede colocar sobre cualquier superficie.
- Resistente a la abrasión, desgaste y a los rayos UV.
- Gran resistencia al impacto.
- Es flexible, no se ondula.

Construcción: Hule 100% Virgen de Alta Calidad.

Acabado: Tachón (Círculos)

Espesor: 1/8" (3 mm)

Dureza: 68 +/- 5 Shore A

Resistencia a la Tensión: 66 kg / cm²

Elongación: 385%

Rango de Temperatura: -20°C a 70°C

Aplicaciones: Ideal para rampas, entradas interiores y exteriores, auditorios, pasillos y en general cualquier área en donde se requiere un piso antiderrapante de alta resistencia.

Pisos Antiderrapantes

No. 8600 PISO DE PVC

- Piso antiderrapante recomendado para zonas de alto flujo peatonal.
Fabricado de PVC de alta calidad que garantiza
- excelente durabilidad y estabilidad dimensional.
- Desarrollado para aligerar cargas y proteger superficies.
- Aislante y autoextinguible.
- Resistente a temperaturas extremas.
- No alberga gérmenes y contiene protector UV.

Construcción: PVC 100% Virgen de Alta Calidad.

Acabado: Tachón (Círculos)

Espesor: 1.60 mm +/- 1.0 mm

Dureza: 75 +/- 10 Shore A

Resistencia a la Tensión: 1275 lb / in²

Elongación: 35%

Rango de Temperatura: -20°C a 65°C

Aplicaciones: Ideal para rampas, entradas interiores y exteriores, auditorios, pasillos y en general cualquier área en donde se requiere un piso antiderrapante de alta resistencia.



Color



Gris Claro

Color



Negro

No. 8600 Piso de PVC

No. Stock	Medida Estándar	Peso
7501042052895	1.70 m de ancho x 30 m de largo	105 kg

* Otras medidas disponibles, consulte a nuestro departamento de ventas.

No. U-7200 PEGAMENTO DE CONTACTO

Pegamento de contacto ideal para pegar pisos antiderrapantes de hule y PVC.

Construcción: Adhesivo de contacto base policloropreno, viscosidad media alta, con olor a solvente, tiempo abierto largo (para pegar en frío o activado). Las uniones de este adhesivo son de gran resistencia, flexibles e impermeables.

Aplicaciones: El pegamento U-7200 se desarrolló especialmente para el pegado de pisos antiderrapantes de hule y PVC.

Modo de Uso:

1. Limpiar las superficies de polvo, grasas y residuos.
2. Aplique una película de pegamento uniforme en ambas superficies a pegar.
3. Deje secar de 10 a 20 minutos según las condiciones ambientales.
4. Una las dos superficies y aplique presión uniforme.

Importante: Producto inflamable, no se exponga a altas temperaturas, chispas o flamas. No se deje al alcance de los niños. Evite el contacto con la piel y los ojos. Use este producto con ventilación adecuada.



No. U-7200 Pegamento de Contacto

No. Stock	Medida Estándar
7501042060074	Lata de 17 Litros



Color
Negro

No. Stock	Medida Estándar	Peso
7501042052925	60 cm x 81 cm	5 kg



Color
Gris

No. Stock	Medida Estándar	Peso por Rollo
7501042052932	Caja con 6 tapetes de 40 hojas c/u, (Total 240 hojas) Medida: 0.45 m 1.15 m	7,10 kg



Color
Negro

No. Stock	Medida Estándar	Peso
7501042015103	0.91 cm x 12 m x 34"	80 kg



Media Luna



Rectangular



Modelo Medievalo

No. Stock	Medida Estándar	Peso
7501042082601	60 x 90 cm	3.25 kg

No. 12500 TAPETE SANITIZANTE

- Ideal para plantas procesadoras de alimentos, laboratorios u hospitales. Mantiene las áreas higiénicas libres de contaminación y gérmenes.
- Tapete sanitario con capacidad para contener 4 litros de solución desinfectante.
- Miles de costillas limpiadoras en su superficie.

Construcción: Hule 100% Virgen de Alta Calidad.
Espesor: 1/8" (3.2 mm)

No. 1500 TAPETE CUARTO LIMPIO ALTA DENSIDAD - CLEAN ROOM MAT

- Tapete de entrada desechable ideal para retener impurezas, polvo y suciedad en áreas en donde se requiere máximo control de partículas.
- Es renovable, simplemente desprenda la hoja superior del tapete.
- Cada tapete contiene 40 hojas.

Construcción: Adhesivo de alta calidad sobre una película de Polietileno.

No. 6800 STALL MAT ®

- Tapete antiderrapante uso rudo ideal para caballos y ganado en general.
- Brinda máxima protección al animal y ofrece una superficie cómoda y segura.

Construcción: Hule de alta calidad reforzado con cuerda de nylon.

Acabado: Diamantado Antiderrapante
Espesor: ¼"

No. 8403 COIR MAT

- Tapetes de Entrada de Coco Natural con dibujo impreso sobre la fibra.
- Base fabricada en PVC para máxima resistencia.
- Previene resbalones gracias a sus superficie rasposa.
- Sólo barra o sacuda.

Aplicacion: Ideal para ser utilizado en jardines, patios, oficinas, casas y comercios.



Innovación en Superficies ^{MR}

UNIMAT DE MEXICO, S.A. DE C.V.

Calle 4 No. 25-D Fracc. Industrial Alce Blanco, Naucalpan, Estado de México CP 53370, México.

Atención a Clientes: Tels: (55) 5236-5420, (55) 5359-7178 | Fax: (55) 5236-5421
Email: ventas@unimatcorporation.com | Pág Web: www.unimat.com.mx

Tapetes Antifatiga



No. 5500 MODULAR CLASSIC®

- Tapete multiusos con excelentes propiedades antifatiga.
- Incrementa el confort y la productividad.
- Evita resbalones y brinda máxima seguridad.
- Conectores en dos de sus lados, permiten unirlo con otros tapetes del mismo tipo para cubrir cualquier superficie.

Construcción: Fabricado de Hule Antiderrapante.

Aplicaciones: Ideal para áreas secas y húmedas en restaurantes, bares, hoteles, clubes deportivos, líneas de producción, comercios e industria en general.

Disponible en 2 tipos de Hule:

Negro: Grado Comercial (Grease Resistant)

Terracota: A prueba de grasas y aceites (Grease Proof)

Colores



Negro



Terracota

Interconectable



No.5500 Modular Classic ®

No. Stock	Medida Estándar	Peso
7501042201106	91 cm x 91 cm	8 kgs



No. 9000 SOLID TOP®

- Tapete económico sin orificios con excelentes propiedades antifatiga.
- Incrementa el confort y la productividad.
- Ideal para áreas secas en donde se requiere una superficie antiderrapante.
- Conectores en dos de sus lados, permiten unirlo con otros tapetes del mismo tipo para cubrir cualquier superficie.

Construcción: Fabricado de Hule Antiderrapante.

Aplicaciones: Ideal para áreas secas y húmedas en restaurantes, bares, hoteles, clubes deportivos, líneas de producción, comercios e industria en general.

Interconectable



Color



Negro

No.9000 Solid Top ®

No. Stock	Medida Estándar	Peso
7501042110093	91 cm x 91 cm x 5/8"	8 kgs

No. 6100 ADVANTAGE LITE

- Tapete antifatiga para cocina.
- Con orillas en sus cuatro lados que ayuda a mantener firme el tapete reduciendo así el peligro de resbalar con él.
- Superficie de drenado antiderrapante.
- Ideal para aplicaciones industriales y cocinas comerciales.

Construcción: Fabricado de Hule Antiderrapante.

Aplicaciones: Ideal para áreas secas y húmedas en restaurantes, bares, hoteles, clubes deportivos, líneas de producción, comercios e industria en general.



Tapetes Advantage Lite

No. Stock	Medida Estándar	Color
750104208072	90 cm x 150 cm (3' x 5')	Negro

No. 5700 DISEÑO PANAL

- Su innovador diseño en forma de panal hace de la limpieza diaria una tarea fácil.
- Su versátil diseño cuenta con conectores en dos de sus lados que permiten unir una pieza con otra para cubrir cualquier área.
- Cuenta con agujeros para un drenado fácil de líquidos.

Construcción: Hule de alta calidad.

Peso: Apróx. 14.5 libras (6.5 kg)

Espesor: ½" (5 mm)

Aplicaciones: Ideal para áreas secas y húmedas en restaurantes, bares, hoteles, clubes deportivos, líneas de producción, comercios e industria en general.



Tapetes Antifatiga Individuales

No. Stock	Medida Estándar	Color
7501042011083	90 cm x 90 cm x 5 mm	Negro

No. 9100 SAFETY SPONGE®



- Innovador tapete en rollo que elimina la fatiga permitiendo imperceptibles movimientos en los músculos, lo que provoca que la sangre fluya más fácilmente, disminuyendo el consumo de energía y logrando reducir substancialmente el cansancio y sus efectos.
- Safety Sponge es la forma más simple, efectiva y económica de resolver la fatiga y sus consecuencias.
- Fabricado de esponja de PVC antiderrapante de alta calidad.
- Orillas achaflanadas brindan máxima seguridad contra tropezones.

Construcción: Esponja de PVC

Acabado: Corrugado antiderrapante.

Espesor: 3/8" (9.5 mm)

Aplicaciones: Ideal para áreas secas en líneas de producción, área de cajas, mostradores, hoteles, clubes deportivos, comercios e industria en general.



Colores



Negro
con
bordes
amarillos



Negro



Gris

Rollos en Color Negro ó Gris

No. Stock	Medidas Estándar	Peso
7501042051768	0.61 m x 18.28 m	40 kgs
7501042051775	0.91 m x 18.28 m	61 kgs
7501042051782	1.22 m x 18.28 m	81 kgs
7501042051799	1.83 m x 18.28 m	122 kgs

*Otras medidas disponibles consulte a nuestro departamento de ventas.

Rollos en Color Negro con Bordes Amarillos

No. Stock	Medidas Estándar	Peso
7501042050983	0.91 m x 18.28 m	61 kgs
7501042050990	1.22 m x 18.28 m	81 kgs

*Otras medidas disponibles consulte a nuestro departamento de ventas.

No. 9500 DIAMOND TOP®

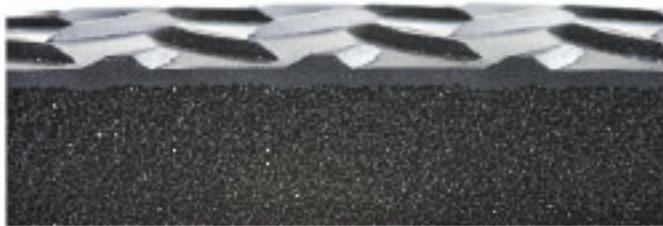
- Tapete antifatiga en rollo de alto desempeño, fabricado de una resistente capa de PVC antiderrapante sobre una base de esponja de neopreno.
- Ideal para áreas con alto tráfico.
- Bordes amarillos brindan máxima seguridad.
- Posee muy buena resistencia a aceites, álcalis y ácidos.
- Superficie diamantada brinda máxima tracción.
- Producto garantizado por 2 años contra defectos de fabricación.

Construcción: Superficie diamantada de PVC de 1/8" con base de esponja de Neopreno de 1/2".

Acabado: Diamantado Antiderrapante.

Espesor: 5/8" (15.8 mm), también disponible en espesor Heavy Duty 15/16"

Aplicaciones: Ideal para áreas secas en líneas de producción, área de cajas, mostradores, hoteles, clubes deportivos, comercios e industria en general.



El más vendido



Rollos

No. Stock	Medidas Estándar	Peso
7501042051232	0.61 m x 22.86 m	102 kgs
7501042051249	0.91 m x 22.86 m	153 kgs
7501042051256	1.22 m x 22.86 m	204 kgs

*Otras medidas disponibles consulte a nuestro departamento de ventas.

Colores



Negro
con
bordes
amarillos



Negro



Gris



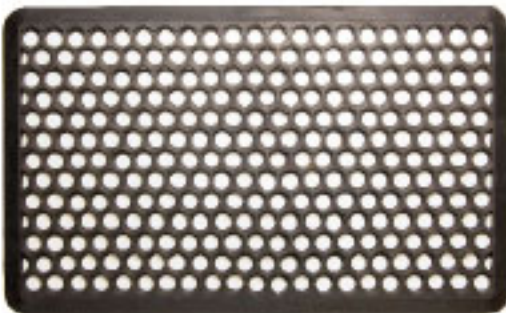
Tapete Marmoleado

No. Stock	Medida Estándar	Color
7501937803213	60 cm x 90 cm x 6 mm	Gris/ Blanco y Azul/ Blanco



Tapete para cajera o mostrador

No. Stock	Medida Estándar	Color
7501042082014	60 cm x 90 cm x 10 mm	Negro



Tapete Antifatiga Individual

No. Stock	Medidas Estándar	Color
7501042052629	45 cm x 75 cm x 12 mm	Negro
7501042052628	55 cm x 85 cm x 12 mm	Negro

No. 3750 MARBLE MAT

- Tapete marmoleado con reverso suave que reduce la fatiga en el usuario.
- Superficie de alta resistencia, excelente para tráfico pesado y desgaste por uso continuo.

Construcción: PVC de alta Calidad y Durabilidad.

Base: Esponja

Espesor: 6 mm

Aplicaciones: Ideal para áreas de cajas, y cualquier otra locación donde la gente pase largo tiempo de pie.

No. 3800 COUNTER MAT

- Fabricado en hule de Alta Calidad y Durabilidad.
- Tapete Individual multiusos con excelentes propiedades antifatiga.
- Superficie y base antiderrapantes.

Construcción: 100% Hule

Peso: 6.00 kgs

Espesor: 10 mm

Aplicaciones: Ideal para áreas de cajas, y cualquier otra locación donde la gente pase largo tiempo de pie.

No. 3050 COMFORT MAT

- Tapete individual multiusos con excelentes propiedades antifatiga.
- Incrementa el confort y la productividad.
- Excelente drenado de líquidos.

Construcción: Hule antiderrapante

Acabado: Perforado para un drenaje perfecto

Espesor: 12 mm

Aplicaciones: Ideal para cocinas industriales y comerciales, áreas de regadera o lavado, y en general cualquier lugar donde la gente pase largo tiempo de pie.

Tapetes Personalizados

No. 6500 PRO IMAGE®

- Cada elemento de su logotipo o diseño es cortado con muy alta precisión y vulcanizado a una base de PVC antiderrapante para crear un tapete de máxima calidad y durabilidad.
- Mejora la imagen de su empresa, retiene el polvo, la mugre y la humedad.
- Reduce costos de limpieza y mantenimiento.
- Contiene componente anti-hongos y protección UV que brinda máxima resistencia a la intemperie.

Construcción: PVC 100% Virgen de Alta Calidad.

Acabado: Tipo spaguetti

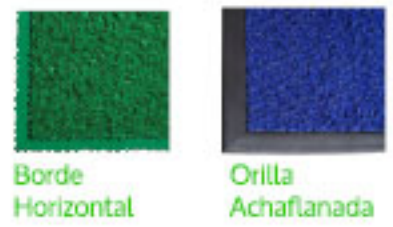
Espesor: 3/8" (9.5 mm).

Base: Disponible con o sin base.

Bordes: Disponible con borde o con orilla achaflanada alto tráfico.

Aplicaciones: Ideal para entradas interiores y exteriores de hoteles, autoservicios, centros comerciales, corporativos, clubes deportivos, comercios e industria en general.

Colores Disponibles



No. 6500 Pro Image®

No. Stock	Medidas Estándar	Color
7501042020009	Cualquier Medida	6.5 kg/m2



No. 6500 ORILLA ACHAFLANADA

- Mejora notablemente el acabado de su tapete.
- Ayuda a prevenir resbalones.
- Incrementa el tiempo de duración del tapete.
- Fácil de colocar, se recomienda usar pegamento de contacto.

Orilla Achaflanada para Tapete Rizo 6500

No. Stock	Medidas Estándar	Peso
7501042015135	Ancho total: 5 cm (ancho expuesto: 2.85 cm)	13 kg
Rollos de 45 m de largo		



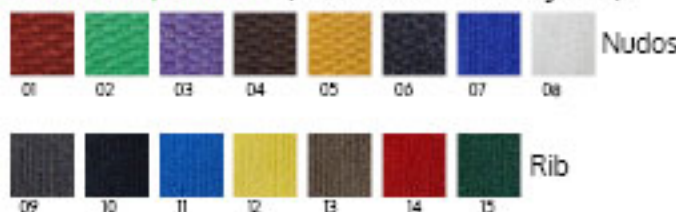
Tapetes Personalizados



Colores Disponibles



Colores Disponibles (Textura de Nudos y Rib)



No. 6200 UNIMAT JET PRINT®

- Innovador proceso de inyección de tinta controlado por computadora que permite crear cualquier logotipo por intrincado que éste sea, los colores son inyectados en el tejido de Nylon en forma permanente.
- Retiene el polvo, la mugre y la humedad.
- 100% Lavable, no se despinta.
- Disponible con logotipo y sin logotipo (liso)

Acabado: Tejido de Nylon de primera calidad sobre una base de hule nitrilo o PVC antiderrapante resistente a grasas y aceites.

Espesor: 5/16" (7.9 mm)

Bordes: Bordes de hule negro o PVC

Aplicaciones: Ideal para entradas interiores y exteriores de hoteles, autoservicios, centros comerciales, corporativos, clubes deportivos, comercios e industria en general.

No. Stock	Medidas Estándar	Colores
7501042051669	0.89 m x 0.75 m	Escoja hasta 8 colores en un mismo tapete de nuestra gama de 53 vivos colores
7501042051676	0.89 m x 1.20 m	
7501042051683	0.89 m x 1.50 m	
7501042051690	0.89 m x 3.00 m	
7501042051706	1.15 m x 1.75 m	
7501042052437	1.15 m x 2.40 m	
7501042052444	1.50 m x 1.75 m	
7501042052451	1.50 m x 2.40 m	
7501042052468	1.5 m x 3.60 m	

No. 6300 GRAPHIC PREMIUM®

- Tapete de máxima calidad y durabilidad, cada elemento de su logo o diseño es cortado con muy alta precisión y ensamblado sobre una base de PVC antiderrapante.
- 100% Lavable, no se despinta.

Acabado: Tejido de Polipropileno de primera calidad sobre una base de PVC antiderrapante resistente a grasas y aceites.

Espesor: 5/16" (7.9 mm)

Bordes: Bordes de PVC u Orilla Achaflanada.

Aplicaciones: Ideal para entradas interiores y exteriores de hoteles, autoservicios, centros comerciales, corporativos, clubes deportivos, comercios e industria en general.



Borde



Orilla Achaflanada

No. Stock	Medidas Estándar
7501042051669	Cualquier Medida



Sourcing Facility Security Standards

**General Merchandise, Food, and
Goods Not For Resale**



February 2013

INTRODUCTION

Walmart maintains a risk-based supply chain security program to ensure that a sourcing facility possesses the procedures necessary to protect against product and shipment tampering. A supplier is responsible to ensure that their production facility meets or exceeds security standards for merchandise shipped directly to Walmart when Walmart Stores, or a Walmart entity, is the Importer of Record regardless of the destination country.

A sourcing facility must participate in an on-site audit to confirm that security standards are met. Below are the **Walmart Security Standards** for a facility that produces and/or ships goods to Walmart. A facility must possess these standards before eligibility to receive a production order or handle Walmart cargo.

Security areas are:

Personnel Security	Page 3
Threat Awareness Program	Page 4
Physical Access Controls	Page 5
Physical Security	Page 7
Container & Trailer Security	Page 10
Procedural Security	Page 13
Information Security	Page 14
Contractor Security	Page 15

Business partners who do not comply with the Supply Chain Security Standards may be subject to the cancellation of their Purchase Orders or the Supplier Agreement with Walmart Stores.

Walmart embraces voluntary governmental and industry supply chain security programs and expects business partners to devote the necessary attention to security matters during all stages of manufacturing and transportation.

Contact Global Security Operations at any of the offices listed below to inquire about the Walmart Supply Chain Security Program or Security Standards:

<u>Region</u>	<u>Contact address</u>
China and North Asia Region	wgsscs1@wal-mart.com
Americas Region	wgsscs2@wal-mart.com
Indian Subcontinent, Southeast Asia Region	wgsscs3@wal-mart.com
Australia, New Zealand, Philippines	
Middle East, Africa and Europe Region	wgsscs4@wal-mart.com

Walmart is serious about supply chain security and expects its suppliers to also take seriously their supply chain security responsibility.

Thank you.

WALMART SECURITY STANDARDS

PERSONNEL SECURITY

1. The facility has a written Employee Security Policy, which includes procedures for hiring, employment application and employee documentation, and screening of new employees. (Critical Question)

- Facility must have a written Employee Security Policy that includes employee hiring, personnel records system, and a screening process.
 - The applicants name is verified by photo ID (country issued identification card, drivers license, passport, etc.).
 - Applicant's current address is verified.
 - Personal references, if any, are contacted.
 - Employment history is verified.

2. The facility has a written policy to require that the Employee Security Policy is reviewed every 12 months to determine if updates are necessary.

- The Employee Security Policy is reviewed every 12 months and updated where necessary and by documenting the 12 month review.

3. Every permanent or temporary employee applicant completes a written employment application before being considered for employment.

- Require every prospective employee to complete an employment application prior to hiring.

4. The facility has a written procedure to conduct a background check for an applicant applying to work in a sensitive position or a current employee working in a sensitive position.

- The facility has a written procedure to perform a background check for sensitive positions such as packing/loading area, security, shipping, IT managers, etc.
- A background check could consist of again contacting previously provided personal references, verify home address is the same, change in personal status such as married, and require the employee to provide a local police check report.
- The facility has evidence of a background check.

5. The applicant's photo ID card is reviewed during the application process. (Critical Question)

- The facility must have a written procedure to review applicant's photo ID card prior to hiring.
- Verification of this review is kept on file.

6. A personnel file is maintained for each employee.

- The facility must maintain a personnel file for each employee containing the original employment application, copy of the applicant's photo ID (a country issued identification card, drivers license, passport, etc.), documents verifying identity.

7. The facility has a written policy to issue a photo identification card or an access card to each employee for access to the facility.

- The facility must have a written policy to require issuing every employee including full-time, part-time, and temporary an access credential. When an ID badge is issued it must include the employee's picture and name and the employee must always wear their badge while at the facility.
- High and Medium Risk: Either a photo ID or an access card is required. Although not required, the facility may use a biometric system instead of photo ID or card access.
- Low risk: The facility must have a written procedure that requires use of either a photo ID, access card, or a process by management/supervisors to verify only employees are permitted access.

8. The facility has a written procedure that requires review of the background check document every 12 months for an employee working in a sensitive position.

- The facility must have a written procedure to review the background check of sensitive positions, such as packing/loading area, security, shipping, IT managers, etc., every 12 months.

9. The facility has a written Employee Termination policy to remove the identification badge, facility access, and system access for an employee who is terminated or resigns?

- The facility must have a written policy for employee termination.
- The policy must include collection of and disabling of an employee's facility identification, access keys and cards.
- The policy must require that security and/or management is informed of employees who resign or are terminated.

THREAT AWARENESS PROGRAM

10. The facility has a written Threat Awareness Program to train employees about the security threat at each segment of the supply chain.

- The facility has a written training program to discuss with employees the threat posed to the supply chain.
- Training focuses on security of the facility: access by only authorized employees and registered visitors, to report someone in a work area who does not belong there, especially in sensitive or restricted areas such as the shipping area, packing area, loading area, warehouse, systems rooms and to report attempted unauthorized access to a computer terminal, etc.

11. The Threat Awareness Program trains employees on how to report a security situation or incident.

- The program includes the procedure for an employee to report a security issue.
- Employees are trained to report a possible security breach, such as a broken window, broken door lock, breach in perimeter fence/wall/barrier, broken or inoperable security alarms/CCTV/exterior lights.
- Employees are trained to report unusual activity.
- Training provides examples of security issues and the reporting process to help employees understand the procedure.

12. The Threat Awareness Program provides specific job related security training to shipping and receiving employees?

- The facility provides specialized training to shipping and receiving employees regarding access to sensitive work areas, reporting unauthorized people in the work area, ensuring that only authorized cargo is loaded into the container or trailer, and how to report situations that may involve a conspiracy to use the supply chain for illegal purposes.

13. Threat Awareness training is provided during new hire orientation and then every 12 months as refresher training to all employees.

- The facility provides training to all new hire employees.
- The facility provides training to all employees as refresher training at least every 12 months.

14. Employees who report suspicious activity and security violations are given some form of encouragement.

- The Threat Awareness Program includes providing an incentive to employees who report suspicious activity and security violations.
- An incentive could include a certificate, recognition during a meeting, cash bonus, time off, or some other form of encouragement.

15. Are Threat Awareness Program security procedures publicized in common areas of the facility?

- The Facility posts security procedures in common areas frequented by employees.
- The facility can determine the best method and manner in which to display the procedures.

PHYSICAL ACCESS CONTROLS

16. The facility has a written policy to ensure that only authorized employees are permitted access to sensitive or restricted areas.

- The facility must have a written policy stating that designated restricted areas or sensitive areas are required to have access controls determining who can enter the area.
- Sensitive areas include packing/loading area, security, shipping, IT managers.

17. Does facility management review and update employee lists that authorize access to sensitive and restricted work areas?

- Facility management should review the list of authorized employees permitted to enter sensitive and restricted areas.

18. A security guard or designated facility manager or supervisor is designated to monitor access to the facility.

- Security guard(s) or designated member(s) of management perform patrols of the facility premises and report security incidents to the facility's management team.
- Facility has designated checkpoints to ensure patrols are made.

Exception for a food pack house: It is sufficient for a designated member of management or an employee to patrol the immediate premises, offices, and any other building on the premises. Patrolling of the produce field or orchard is not necessary.

19. The facility periodically performs an inspection of an existing perimeter fence or wall to check for damage, attempted illegal access, and needed repairs.

- The facility should have a procedure for inspection and maintenance of an existing perimeter fence or wall.

Exception for a food pack house: some pack houses may operate seasonally, in a temporary structure, in a temporary location, or are a field location. In these cases, a wall or fence is not required. It is sufficient for these facilities to have natural barriers or to use a roving security patrol or designated employees to patrol the perimeter.

20. The facility has a written procedure requiring employees to immediately report any security incident to facility management.

- The facility should have a policy and procedure requiring that security incidents are reported, logged, and investigated.

21. Does the facility have a written policy and procedures to deny access of employees who either resign or are terminated?

- The facility must have a written policy to deny access of employees who have resigned or been terminated.
- A list of recently resigned or terminated employees should be updated whenever an employee is terminated or resigns.

22. Additional security monitoring is applied for a building or structure that adjoins the facility that could enable unauthorized entry.

- In case of an adjoining structure or building that could allow access to the facility additional security measures are applied to mitigate the risk. For example, additional fencing, a security guard, use of CCTV, or designated employees may be assigned to monitor the area.

23. The facility uses Closed Circuit Television (CCTV) or another surveillance method to monitor activity in sensitive areas within the facility such as receiving, shipping, final packing, main offices, the lobby, and the computer server/systems room. (Critical Question)

- CCTV is not required. If CCTV is not used, the facility uses another surveillance method such as security guard patrols or designated management to monitor areas of the facility.
- If the facility uses CCTV, determine if recordings are kept for a minimum of 30 days.

24. The facility has a written procedure that requires a visitor and a pick-up/delivery driver to show photo identification before entry is permitted.

- The facility must have a written procedure requiring security staff or a receptionist to verify the photo identification of a visitor.

25. The facility has a policy to issue a serial numbered visitor badge to each visitor and maintain a Visitors Log.

- A facility has a written policy to issue a visitor badge.
- Visits are recorded in a Visitors Log (name, date, time in and out, who at the facility is to be visited, and the badge number).

26. The facility has a written policy that all visitors are escorted while at the facility.

- The facility must have a written policy indicating that all visitors are escorted.

27. The facility has a written policy that requires a control log is maintained for any pick-up or delivery truck arrival and departure to include the driver's name, driver's license number, truck license number, reason for visit, and that the control log is kept for 30 days. (Critical Question)

- The facility must have a written policy to log a truck's arrival and departure to include the drivers name, driver's license number, truck license number, time of arrival, time of departure, and reason of visit. The log is kept for at least 30 days.

28. The facility has a written policy indicating that employees are not permitted to bring personal items into the final packing and shipping areas. (Critical Question)

- The facility must have a written policy stating that no personal items (such as a lunch box, a purse, a backpack, etc.) are allowed in the packing and shipping areas.
- The facility may provide an appropriate location for employees to keep personal items while at the facility.

PHYSICAL SECURITY

29. The facility has appointed in writing a company official responsible for facility, employee, and transportation security.

- The facility has designated in writing a manager responsible for overall security to include creating the security policies and procedures and that physical security is accomplished in accordance with each security policy.

30. The facility has a written policy that requires all security procedures are documented as either a policy or procedure. (Critical Question)

- The facility must have a written policy that requires all security procedures are documented as a policy or procedure.

31. The facility security policies are reviewed every 12 months and updated when necessary. (Critical Question)

- The facility requires that all security policies are reviewed every 12 months and necessary updates are made.

32. A security assessment of the facility site is conducted to identify weaknesses at least every 12 months? Are the weaknesses identified, recorded in a log, and corrected in a timely manner.

- The facility must perform a security site assessment every 12 months.
- Facility must document issues identified and take necessary corrective action.

Exception for food pack house: some pack houses may operate in a temporary structure or a temporary location. In such cases, a site security assessment is not required.

33. The facility restricts access to cargo handling and storage areas.

- The facility must use an appropriate method to ensure that only authorized employees and escorted visitors are permitted access to cargo handling and storage areas.
- Cargo handling and storage areas should be designated as restricted areas and display signage.

34. Facility access gates, exterior doors, and windows are secured with locking devices.

- Locking devices could be a manual applied lock, locking bars, security latches, or electronically controlled devices.
- Windows should be locked from the inside.

Exception for a food pack house: Some food pack houses may operate seasonally in a temporary structure or in a temporary location. In such cases, there may not be doors, windows, or specific access gates. There may also be some "open" pack houses that have no walls, doors or windows. In these situations the security standard does not apply.

35. The facility has an intrusion detection system or a security surveillance method for sensitive/controlled access areas.

- The facility can use either an electronic detection system or manual methods such as roving security guards or management/supervisors that monitor sensitive areas.

Exception for a food pack house: Some food pack houses may operate seasonally in a temporary structure or in a temporary location. There may also be some "open" pack houses that have no walls, doors or windows. In these cases, an intrusion detection system is not required.

36. The facility has a written Access Control Program that establishes responsibility to maintain control of all locks, keys and access cards? (Critical Question)

- The facility has a written procedure for an Access Control Program that describes methods used to record and track of keys or other access devices issued to authorized employees for use within the facility.

Exception for a food pack house: Some food pack houses may operate seasonally in a temporary structure or in a temporary location that do not possess doors or gates that require the use of a lock/key or access cards. There may also be some "open" pack houses that have no walls, doors or windows. In these cases this security standard does not apply.

37. The facility's Access Control Program include a control log that accounts for all keys/access cards not issued or are issued and not returned?

- The program must include a control log that accounts for all keys/access cards on-hand and not issued, those issued, and any returned to include the employee's name, date signed out, date signed in, reason for use, and the name of issuing person.

Exception for a food pack house: Some food pack houses may operate seasonally in a temporary structure or in a temporary location that do not possess doors or gates that require the use of a lock/key or access cards. There may also be some "open" pack houses that have no walls, doors or windows. In these cases this security standard does not apply.

38. The Access Control Program includes an inventory process to account for all keys/access cards.

Based on Country Risk Rating:

- *High and Medium Risk: Once every month*
- *Low Risk: Once every 3 months.*
- The key/access card inventory check must be recorded and available for audit.

39. Are lost keys/access cards reported immediately to the facility Security Manager?

- The Access Control Program policy includes the process to report a lost key or access card.

40. The facility's buildings are constructed of materials that resist unlawful entry.

- The facility's production building(s) and storage building(s) are constructed of materials that deter easy access by an intruder. Examples of satisfactory construction materials include metal siding, reinforced wood, brick, cement block, etc.

Exception for a food pack house: Some food pack houses may operate seasonally in a temporary structure or in a temporary location and construction materials are made of less permanent materials. There may also be some "open" pack houses that have no walls, doors or windows. In these cases this security standard does not apply.

41. The facility has a documented process to inspect buildings for security and maintenance issues each month and to make necessary repairs.

- The facility production buildings and storage buildings are inspected for either signs of illegal entry or needed repairs based on Country Risk Rating
 - *High Risk*: Once every month.
 - *Medium Risk*: Once every month.
 - *Low Risk*: Every 6 months
 - Documentation of this should be available in the factory.

Exception for a food pack house: Some food pack houses may operate seasonally in a temporary structure or in a temporary location and construction materials are made of less permanent materials. There may also be some "open" pack houses that have no walls, doors or windows. In these cases this security standard does not apply.

42. The facility's perimeter is secured with a fence or wall or patrolled by security guards/facility management or supervisors, to deter unauthorized access.

- The facility is protected by a wall or fence to avoid easy and unwanted access by an intruder.
- Underground access points such as utility tunnels or water drainage should be secured to prevent unauthorized access into the facility.
- Facilities in a country rated Low risk are not required to have a fence or wall, however, they must use a security guard or designate in writing employees to periodically patrol the property to detect and deter unwanted visitors.

Exception for a food pack house: Some pack houses may operate seasonally in a temporary structure, in a temporary location, or are a field location. In these cases, a wall or fence is not required. It is sufficient for these facilities to have natural barriers or to use roving security patrol or designated employees to patrol the perimeter of the facility.

43. Facility management, the security manager, or designated security employees conduct meetings to review security alerts and discuss how to improve facility security.

- The facility should indicate when meetings take place. Any regular meetings can be noted as compliant.

44. There is radio or phone communication between the central security office and any guard posts.

- The facility uses a reliable communications method between security personnel and any exterior guard post or roving guard.
- All security guards should be equipped with hand held radio sets /cell phones or have access to telephone for communication.
- This question is not applicable for a facility that does not use a security guard force and instead uses employees to perform a roving security function, it is sufficient for the designated employee to have adequate means to communicate with facility management.

Exception for a food pack house: If the facility does not use a security force then it is sufficient for the designated security person to have adequate means to communicate with facility management.

45. During darkness the facility perimeter fence/wall is well illuminated.

- If the facility possesses a perimeter fence or wall, lighting should sufficiently illuminate the fence, gates, or other access points.
- Security lighting allows for visual surveillance during darkness. The facility must have outside flood lighting sufficient to illuminate areas between buildings, the fence/wall line, the container/trailer stuffing, loading and storage areas.

Exception for a food pack house: If the facility does not have a permanent structure then this security standard does not apply.

46. Access to outside lighting switches or controls is restricted to only authorized employees or the security guard supervisor.

- Lighting switch access should have controls to ensure that unauthorized persons cannot access the switches.

Exception for a food pack house: If the facility does not have a permanent structure then this security standard does not apply.

47. Facility management has direct communication to local law enforcement authorities?

- The facility should have an emergency contact list such as police, fire station, hospital, and ambulance.

48. Visitor and employee personal vehicles are prohibited from parking near a cargo handling area, a cargo storage area, or near cargo vehicles.

- The facility must not permit personal vehicles parked near cargo loading or handling areas.
- Due to parking space restrictions, some parking areas may be combined; however, during container/trailer loading all personal vehicles should be moved.

49. Only facility management and a designated security guard supervisor are permitted to have keys or other controls necessary to open/close facility gates.

- The facility has a process to ensure that only authorized personnel are issued keys/control devices to open, close, lock, and unlock the facility access gates

50. The facility's gates are monitored by security guards and/or closed circuit television (CCTV).

A facility with access gates, whether for truck carriers or employees/visitors, should ensure the gates are monitored based on country risk:

- *High Risk:* Monitored by security guards 24/7.
- *Medium Risk:* Monitored by security guards 24/7
- *Low Risk:* Monitored by either security guards or designated facility employees during hours of operation.

Exception for a food pack house: .Facility gates, if used, may be monitored by the use of roving security guards, CCTV, or a designated facility employee.

CONTAINER / TRAILER SECURITY

51. When the facility uses a contracted consolidator to load containers or trailers, does the facility have a written contract with the consolidator that requires them to have security standards for employee hiring, security of their perimeter, security of their cargo holding areas, and security of their cargo loading docks.

- The facility must have a written contract with the freight consolidator that specifies security requirements consistent with the country risk rating and the facility's security standards.

52. The gate security guard or a designated facility manager performs a container or trailer inbound inspection? (Critical Question)

- The facility maintains a container/trailer inspection process to include looking for signs of modification and inspecting the undercarriage for hidden devices or packages.

53. The gate security or a designated facility manager performs a truck outbound inspection and the results are recorded in an Outbound Vehicle Log?

- An outbound inspection will include verifying that the transportation documents are accurate and complete, the driver has the correct container or trailer, and that the actual security seal number is the same seal number listed on the shipping document.
- The Outbound Log captures the driver's name, truck license number, container/trailer number, seal number, date and time of departure based on country risk:
 - *High risk:* A completed log should be kept for 12 months.
 - *Medium risk:* A completed log should be kept for 6 months.
 - *Low risk:* A completed log should be kept on file for 2 months.

54. Outbound container or trailer incidents involving a seal number discrepancy or a broken security seal are reported to facility management.

- A seal incident is recorded on the Outbound Log and in a facility Security Report.
- The facility has a process to resolve the discrepancy.

55. When a seal discrepancy is discovered, does facility management or security examine the container or trailer contents for illegal cargo?

- The facility should have a process to resolve a seal discrepancy before the container/trailer is permitted to depart from the facility.

56. An empty or loaded container or trailer is kept in a secure area at the facility?

- The facility must maintain a container or trailer in a secure manner.
- Facility security or a designated member of management must periodically monitor the security of containers and trailers.

57. When stored at the facility, is an empty and loaded container or trailer secured with a lock or high security seal.

- The facility must use either a lock or a high security seal to secure a container or trailer while held in temporary storage.
- When a lock is used, the shipping supervisor must have control of the key.

58. A stored container or trailer that has potentially been tampered with is reported to a security supervisor or facility management.

- The facility has a procedure to identify and report if potential tampering to a container or trailer has occurred.
- The facility procedure includes instructions on how to report the incident.

59. A container or trailer loading is supervised by either a security guard or a designated member of management to prevent introduction of non-manifested cargo.

- A security guard, a shipping supervisor, or a designated member of management is physically in the shipping area to observe cargo loading and to ensure security procedures are followed.

60. When CCTV is used to capture container/trailer loading, the recording is kept for a minimum of 30 days.

- When CCTV is used at the facility, the system captures the conveyance loading process, to include applying a security seal.
- The facility must keep a recording of the loading process for a period of 30 to 45 days.

61. Prior to loading a container or trailer integrity and security is verified by performing a 7-point inspection (Critical Question)

- The facility has a process to perform a 7-point inspection consisting of checking the front wall, left side wall, right side wall, floor, ceiling/roof, inside and outside of doors, and the undercarriage of the container or trailer.
- Anomalies are reported to a security guard, the shipping supervisor, or a designated member of management.

62. A record of the container or trailer 7-point security inspection is maintained at the facility for at least 45 days.

- The 7-point inspection process and results are recorded on a tracking log or some another document for at least 45 days.

63. The facility places an ISO 17712 High Security Seal on a container or trailer immediately after loading is completed. (Critical Question)

- The facility secures the conveyance door latch with an ISO 17712 high security seal immediately after loading is complete.
 - *High risk:* High security cable seal is used.
 - *Medium risk:* High security bolt seal is used.
 - *Low risk:* High security bolt seal is used.

Exception for a food pack house: When the facility ships break-bulk items, or cartons moving to a freight consolidation facility, a padlock may be used to secure the conveyance.

64. The facility has a process to ensure that only authorized management and the shipping supervisor has access to high security seals. (Critical Question)

- The facility has designated specific management /supervisor employees with access to high security seals.

65. The facility has a method to ensure that unused security seals are kept securely.

- The facility's process ensures that seals available for use are kept in a secure cabinet, secure drawer or some other secure location that is not easily accessible by unauthorized personnel.
- Only authorized employees have access to the seals.
- A missing seal is reported to security or a supervisor.

66. The facility has a written procedure for affixing, recording, and tracking high security seal use.

- The facility has a written procedure that states how high security seals are affixed to a container or trailer, are recorded onto a usage log, and are tracked.

67. The facility maintains a Seal Control Log for six months.

- The facility utilizes a Seal Control Log to track seal usage.
- The log must include seal usage information such as container/trailer number, date used, and name of person using the seal.
- On-hand and available seals are recorded on the log in sequential order.
- The seal control log is kept on file for six months, either electronically or hard copy.

68. The shipping supervisor or an authorized employee verifies that the transportation documents are complete and accurate.

- The facility has a procedure for the Shipping Supervisor or an authorized employee to inspect shipping documents for accuracy.

PROCEDURAL SECURITY

69. The facility uses security methods to prevent tampering with goods during final packaging. (Critical Question)

- The facility may employ security guards, employees designated by management, or CCTV to monitor the final packing of goods.
- If CCTV is used, the recording should be maintained for a minimum of 30 days.

70. The facility has a process to screen arriving packages and mail prior to distribution. (Critical Question)

- The facility has a process to screen arriving mail prior to distribution.

71. The facility has a written procedure to ensure that data used to create cargo documents and manifests are accurate, legible, complete, and protected against tampering or loss. (Critical Question)

- The facility has a written procedure to ensure that data used to create cargo documents and manifests is accurate, legible, complete, and protected against tampering or loss.
- Cargo shipping documents are kept in secure location to prevent tampering.

72. The facility's shipping department maintains a record of each shipment made.

- The facility has a process that requires shipping records are kept for a specified period according to local law.

73. The facility conducts a review of shipment information and documentation controls to verify accuracy and security.

- A record of the review and findings is documented and produced for an audit based on country risk rating:
 - High risk country: Review every 3 months.
 - Medium risk country: Review every 6 months.
 - Low risk country: Review every 12 months.

74. The facility has a process to ensure that international and domestic cargo shipments are kept separate in the shipping area.

- The facility can demonstrate their process to ensure that domestic and international cargo is kept separately.

75. The facility requires employees to report anything unusual found in a shipment or shipment documents.

- The facility must have a procedure for employees to report anything unusual found in a shipment, such as a different carton, or in the accompanying documents, such as improper cargo description.

76. The facility uses a method to count outbound cartons to identify an overage or shortage.

- Facility must have a process to ensure the correct number of cartons are loaded into a container or trailer for shipment.

77. The facility has a process to ensure shipping cartons are properly labeled with item description and carton weight before loading or shipping.

- Facility has a process to ensure that shipping cartons are properly labeled to indicate item description and weight.

78. Prior to selecting a highway transit carrier the facility considers company history, driver/employee hiring procedures, and existing transit security controls.

- The facility has a procedure to check the carrier's company history, employee hiring procedures, and internal security controls prior to hiring.
- The question is not applicable (N/A) if the facility does not arrange transportation of the cargo to the port or to the border crossing location.

79. The facility's written agreement with their transport company indicates preferred transit route(s) used by the driver, the allowable transit time limit, designated rest/meal stop locations and a process for a driver to report a container or trailer security issue?

- The facility's contract with their transportation service company includes the commercial routes that used, allowed transit time, designated rest/meal stops and requires a driver to report any security issue involving the cargo.
- This question is "N/A" if the facility is not responsible for arranging the transporting of the container or trailer.

80. The facility conducts a security review of their transport company to ensure compliance with the contract.

- The facility must conduct a security review of their contracted transport company to include driver hiring procedures, facility access controls, and truck security inspection.
- The facility must document and retain the transport company security review based on country risk:
 - High risk country: every 12 months
 - Medium risk country: every 12 months
 - Low risk country: every 24 months

81. The facility has a written policy that designates which employees are permitted access to the information systems. (Critical Question)

- Facility security policy designates specific company employees or job functions with responsibility for IT system security.
- Policy permits access to the systems control room by designated systems contractors or service providers when accompanied by a facility supervisor.

INFORMATION SECURITY

82. The facility has designated a system administrator responsible for establishing system users and their identity codes/user names.

- The security policy designates a manager responsible for systems controls and for assigning User IDs/ access controls.

83. Designated computer terminal users are assigned a password and are required to change their passwords periodically.

- The facility has designated specific job functions and employees with access to computer systems.
- Best practice: Users of facility computers should be required to change their personal password at least every six months.

84. The systems administrator reports a security incident to facility management.

- The systems administrator reports security incidents to facility management.

85. Each computer terminal has a close and lock feature after a period of inactivity.

- Computer terminals lock after a period of inactivity.

86. The system administrator receives a report of invalid password attempts.

- The systems administrator should receive and review records of invalid computer terminal password attempts.
- The system administrator reviews the system generated lock out report for suspicious activity and takes necessary action to determine the cause of the lock out.

87. The system administrator investigates reported incidents of attempted unauthorized system access or breach.

- The systems administrator has a method to track and investigate unsuccessful attempts to access the system.

88. The facility's information system has an intrusion warning program such as anti-virus programs.

- The facility's computer system has a program to detect unauthorized access/attempted access by hackers and provides a report for management review.

89. The facility's data is saved on a back-up system that enables restoration in the event of significant data loss.

- The facility has a method to back-up and restore data in case of a significant loss.

CONTRACTOR SECURITY

90. The facility has a written procedure regarding security vetting of service contractors who require routine or scheduled access to the facility. (Critical Question)

- The written procedure requires vetting of contractors with access to sensitive or restricted areas to be vetted.
- Vetting considers the contractor's security controls, employee hiring process, and corporate history.

91. The facility has a procedure that provides security standards for contractor employees who enter the premises.

- Procedure is provided to contractor employees stating security standards to include access to only specific areas of the facility, proper access ID badge or card, and how to report a security incident.
- The procedure includes a requirement that a contractor must report a security violation to facility management.

92. The facility assigns an ID badge to a contractor's employee that enters the premises?

- The facility assigns an ID badge to a contractor's employee.
- The procedure includes positive identification, such as a photo ID, before issuing the ID badge.
- The procedure includes requiring the badge is worn and visible anytime the contractor employee is at the facility.
- The identification badge is issued and returned daily.
- The identification badge is accounted for by the facility.